



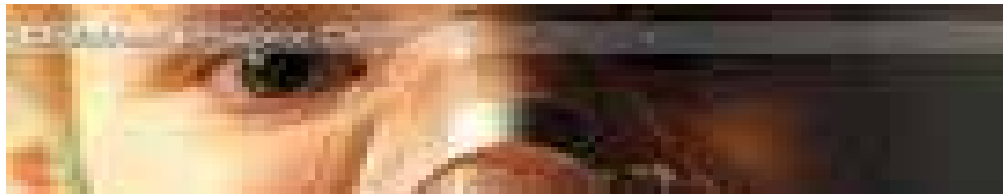
The use of Non-Medical Prescribing for Children and Young People with Life Shortening Conditions

Zoë Wilkes

Nurse Consultant for Children's Palliative
Care/Modern Matron

The Team

- **Diana Children's Community Service**
- Part of Specialist Children's Community Health Services:
- Respite
- Child and Family Support
- Acute interventions
- Multi-cultural links
- Palliative Care
- Terminal Care



Local Service Provision

- Large University Hospital
- Social Services
- Education
- Local Children's Hospice/'Voluntary Services
- Local Adult Hospice





Transcribing

- Respite Service – Children from 0-12 years.
- Prescribed medication given at home by Health Care Worker during respite visit.
- Competencies implemented to ensure safety of staff and child.
- Medication transcribed onto new charts to ensure continuity of respite sessions



Transcribing

- Transcription of already prescribed medication from a previously signed chart.
- Correspondence with GP to agree this process.
- New chart checked against old chart (with child's lead nurse/keyworker) to ensure accuracy.



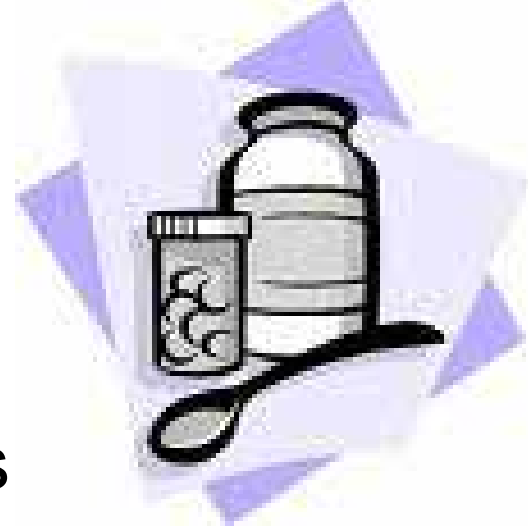
Benefits

- Continuity of Respite service (No chart-No service)
- Less work for GP
- Children known to prescriber – changes in condition highlighted
- Source of support and advice to staff

Symptom Control/End of Life

- Terminal Care On-Call Provision
- Qualified/experienced community children's nurses
- Symptom management/end of life support provided in child's home:
 - Symptom Control Tool
 - Symptom Control Manual
 - Rainbows Medical Cover (for non-oncology)
- Prescribing of medication to manage symptoms and ensure quality of life

Benefits



- Service increased over last 5 years
- 1-3 children initially now 15 per year (11 oncology, 4 complex care) since prescribers on board
- Access to medication is timely
- No lengthy waits
- Less discomfort to child
- Prevents hospital admission
- Symptoms managed effectively
- Prescribed by experienced staff

Hospital admission avoidance

- Children with highly complex needs
- Known by Diana Community Staff
- Highly specialised professionals
- Skilled/experienced at recognising, assessing, prescribing and treating
- Especially at times where deterioration is evident



Benefits

- Reduced hospital admissions for the child and family
- Reduced cost to NHS
- Quality of life is enhanced and maintained in environment familiar to the child and family
- Medications accessed in a timely manner
- Specialist advice and support more readily accessible
- Eliminate repetition of child's history

Overall Benefits

- Continuity of care
- Reduced hospital admissions
- Enhancing quality of life
- Effective management of symptoms/end of life care
- ‘Good death’
- Specialist care and support
- Support for family/siblings



FreeFoto.com

