

Princess Alexandra Hospital

METRO SOUTH HEALTH SERVICE DISTRICT



Extended Stay Unit (ESU)
A safe, efficient way of caring for patients.

Tracey Winwood, Sean Birgan,
Paula Foley, Elizabeth Garrahy

ESU- A safe, efficient way of caring for patients.

- Facility
- History
- Evidence





SURGICAL CARE UNIT



EXTENDED STAY UNIT

- ❖ Hours of operation
- ❖ Bed numbers
- ❖ Patient Criteria - post-operative surgical patients.
- preoperative minor emergency cases.
- ❖ Patients discharged by 0800 the next day.
- ❖ All patients receive post discharge phone call 24 hrs after discharge.

History

- ❖ Bed shortages
- ❖ Increased Surgical Services
- ❖ Overnight stayers in PACU, Radiology & ED
- ❖ Discussions with Access Improvement Team
- ❖ Site visits of 23 hour care units in Sydney & Melbourne



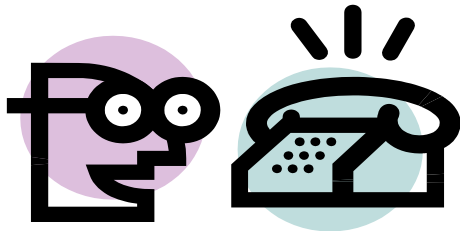
UNIT EVALUATION ANALYSIS

- ❖ Patient satisfaction
- ❖ Length of Stay (LOS)
- ❖ Cost saving comparisons.
- ❖ Staff Satisfaction
- ❖ Operating theatre cancellations
- ❖ Reduction in overnight stays in PACU



Patient Satisfaction

- ❖ Post discharge phone calls



- ❖ Patient Incidents (PRIME)
 - ❖ No SAC 1 or 2 incidents

- ❖ Post op complications



Length of Stay

Discharges July 2009 to May 2010, Data Source: HIMS July 2010

DRG and Description	Discharges from ESU			Discharges from "other wards"		
	OBDs	ALOS	Avg WAU	OBDs	ALOS	Avg WAU
C16A - Lens Procedures	126	1.0	1.03	55	1.9	27
I30Z- Hand Procedures	102	1.1	84	125	3.4	40
C03Z - Retinal Procedures	82	1.0	99	60	2.6	31
I16Z - Other Shoulder Procedures	76	1.0	98	71	2.1	46
I19Z - Other Elbow or Forearm Procedures	61	1.0	98	101	2.7	46
J11Z - Other Skin, Subcutaneous Tissue and Breast Procedures	59	1.0	22	114	1.8	33
J08B - Other Skin Graft and/or Debridement Procedures W/O Catastrophic or Severe CC	55	1.0	45	231	3.4	60
D04B - Maxillo Surgery W/O CC	43	1.0	57	25	1.7	21
G09Z - Inguinal and Femoral Hernia Procedures Age>0	44	1.0	37	73	2.1	34
L07B - Transurethral Procedures Except Prostatectomy W/O Catastrophic or Severe CC	39	1.1	29	181	1.7	88
I27B - Soft Tissue Procedures W/O Catastrophic or Severe CC	36	1.0	36	131	4.7	34
J06B - Major Procedures for Non-Malignant Breast Conditions	38	1.1	41	119	3.3	43
L64Z - Urinary Stones and Obstruction	35	1.0	14	145	2.2	29
H08B - Laparoscopic Cholecystectomy W/O Closed CDE W/O Cat or Sev CC	35	1.0	42	92	1.9	63
I23Z - Local Excision & Removal of Internal Fixation Device Excl Hip and Femur	36	1.1	20	80	2.5	26
I13C - Humerus, Tibia, Fibula and Ankle Procedures Age <60 W/O Cat or Sev CC	32	1.1	54	104	3.4	58
I29Z - Knee Reconstruction Or Revision	29	1.0	41	8	1.6	7
J10Z - Skin, Subcutaneous Tissue and Breast Plastic O.R. Procedures	31	1.1	17	81	3.2	21
F20Z - Vein Ligation and Stripping	26	1.0	25	17	1.1	15
C05Z - Dacryocystorhinostomy	25	1.0	23	7	1.8	4



Queensland
Queensland Health

Procedure Type	ESU LOS	Ward LOS
Hand Procedures	1.1	3.4
Skin graft or debridement procedures W/O Catastrophic or severe CC	1.0	3.4
Humerus, Tibia, Fibula and ankle procedure	1.1	3.4

COST SAVING COMPARISONS

Average daily cost of ESU 12 beds in
comparison to surgical ward beds
Feb 08 to June 08

	Average daily cost per bed (Weekly cost 5 days	Annual bed costs
Extended Stay Unit	\$283	\$16,980	\$815,040
Surgical Ward	\$398	\$23,880	\$1,146,240
Orthopaedics	\$517	\$31,020	\$1,488,960

STAFF SATISFACTION



OPERATING THEATRE CANCELLATIONS



POST ANEASTHETIC CARE UNIT (PACU) OVERNIGHT STAY PATIENTS



CONCLUSION

SAFE - Staff
- Patients

Efficient- LOS
- Cost Savings

Recommendation

