

Bridging the Gaps

A Northern Health Approach To Integrating Care for People with Cognitive Impairment

Pauline Donaldson

HARP Dementia Consultancy Service



Northern Health

The Challenge



Northern Health

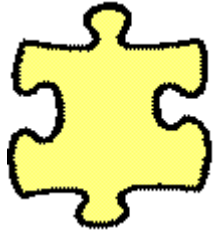
Northern Health

- **Culturally linguistically diverse**
- **Northern Metropolitan/Semi rural**
- **Low socio- economic**
- **5 campuses**
 - **Acute/GEM/Rehab**
 - **Specialist/Ambulatory Services**
 - **Community Services**
 - **Residential Facility**



Northern Health

Northern Health Map



Cognitive Dementia & Memory Service



ACAS



Dementia Consultancy Service



Dementia Consultancy Service

- **HARP Funding**
- **Target Group**
- **Assessment**
- **Carer Support**



Northern Health

- **Care Coordination**
- **Residential Support**
- **Service Links**
- **Brokerage funding**



Northern Health

Northern Health Map



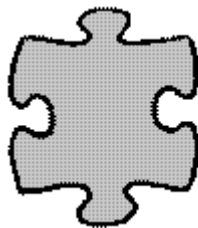
**Cognitive Assessment & Dementia
Management**



ACAS



Dementia Consultancy Service

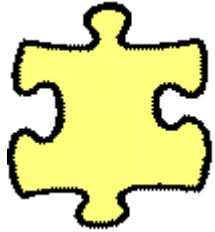


**Aged Psychiatry Assessment &
Treatment Team**



Northern Health

Northern Health Map



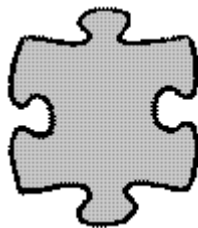
**Nursing Clinical Guidelines for Assessment
Management of People with 'Behaviours of Unmet Needs**



Experiencing Dementia Simulation



Guidelines for Dementia -Friendly Environment



Cognitive Impairment Identifier



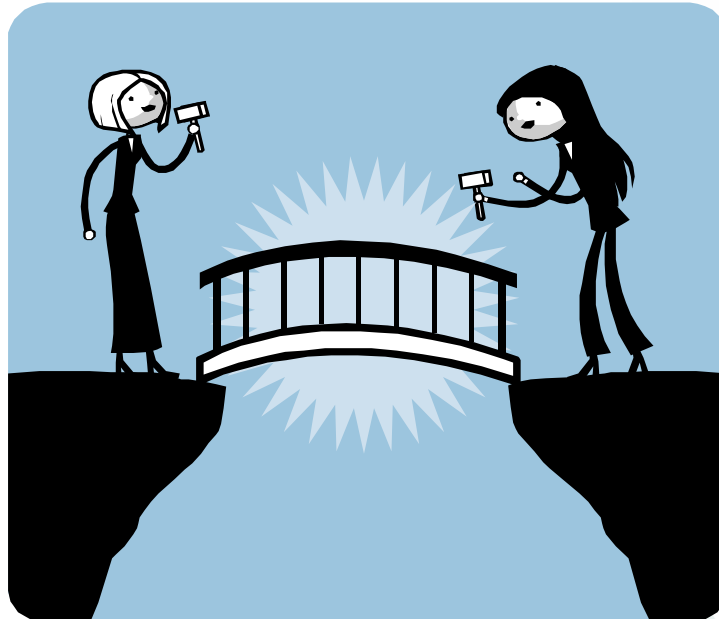
Northern Health

Building the Bridges

**Extension of Dementia
Consultancy Service**

Education Program

**Personalised
Care Plan**



'Key To Me'

**Dementia Friendly
Unit**

HealthSmart



Northern Health

Evaluation

- **Minimum data set**
- **Carer Self – Efficacy Tool**
- **Residential education sessions**



Northern Health

What Needs More Work

- **Lack of pathway**
- **Change Champions**
- **Allied Health Assistant/Volunteers**
- **Hospital – To - Home**



Northern Health

Learnings

- **Long term work**
- **Value of experiential education**
- **Value of key worker**
- **Value of inter-disciplinary, cross campus working party**



Northern Health