

CLINICAL PATHWAYS – continuing the journey

Michele Dobe
Clinical Pathways Coordinator

Epworth Freemasons Hospital
East Melbourne

Epworth Freemasons Hospital

- Established 1937
- Epworth Healthcare Group May 2006
- Not for profit organisation
- 265 Inpatient beds
- Surgical, Oncology & Maternity Services
- Day Procedure Centre & CCU



- Pathways in use since early 1990's
- Current format has evolved over last 6 years
- 40 Clinical Pathways
- 7 Patient Pathways

2002 → 2004

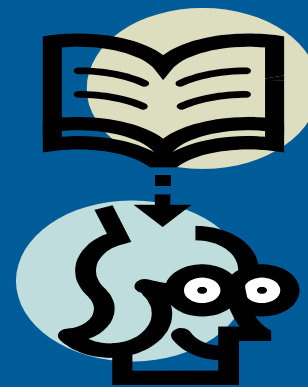
- 2002 booklet format developed
- Comprehensive information from admission to discharge
- Commenced on Orthopaedic ward

What didn't work

- No input from Doctor's
- No input from staff
- Little education provided on implementation
- Lack of continuity of position
- No handover little direction to continue
- Staff satisfaction survey & compliance audit

2004 → 2006

- Nursing Strategic Plan 2004
- Documentation & Clinical Pathways gained number 1 priority
- Working party established



What worked

- Working party
- Audit conducted
- Feedback gained from stakeholders
- Issues identified



Issues Identified

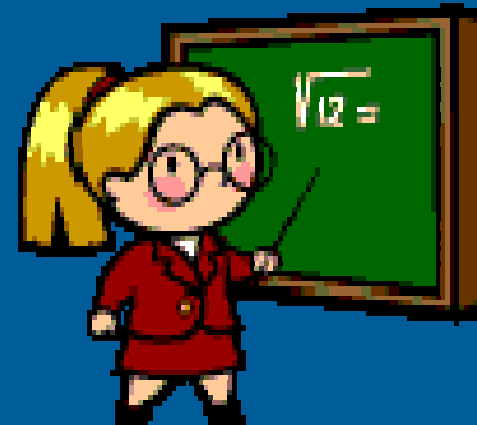
- Access to information
- Duplication
- Implementation
- Impractical

What worked

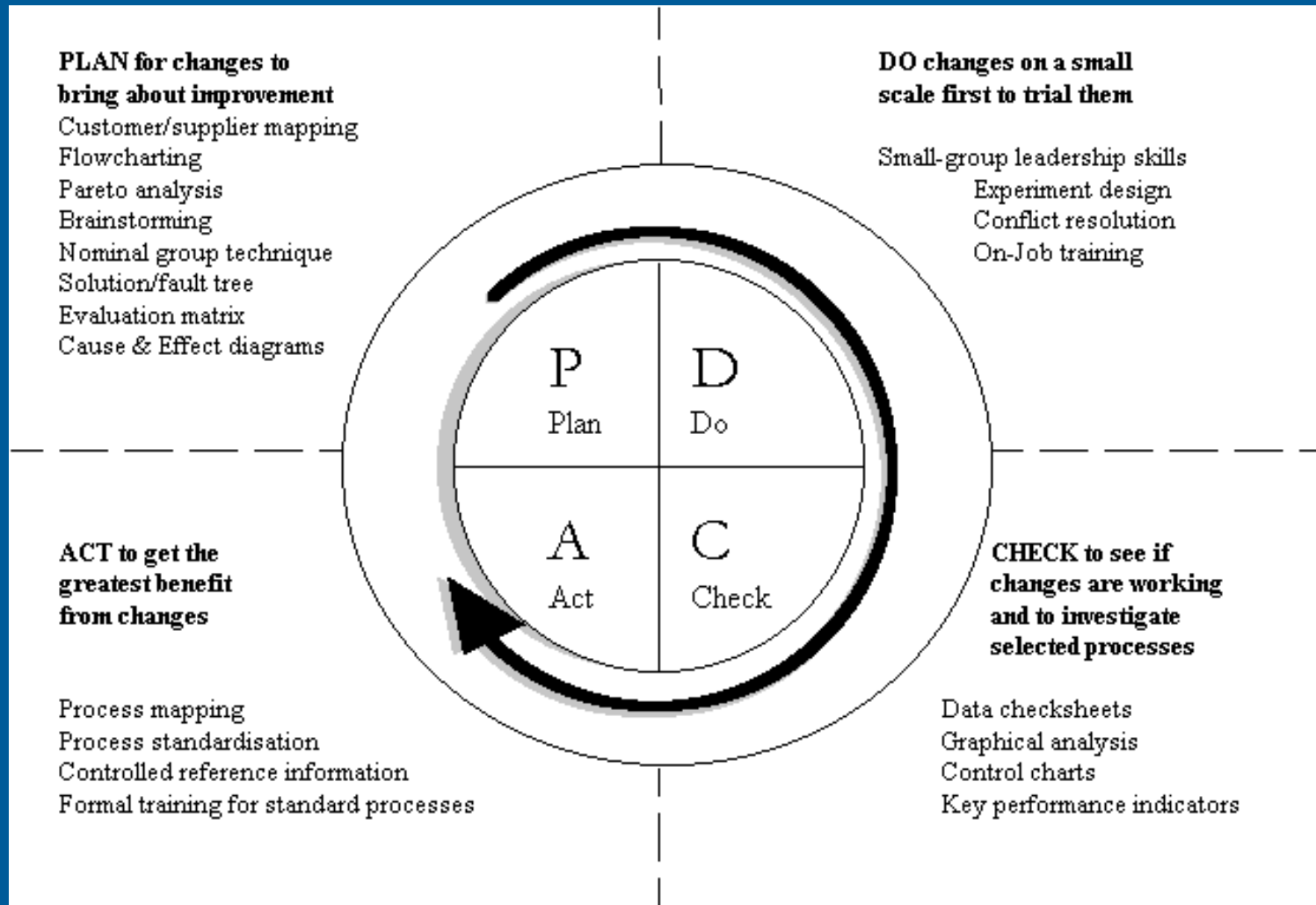


- Recommendations developed
- Recommendations approved
- Changes implemented

- Documentation Launch
- Documentation Education Package
- Inservices provided



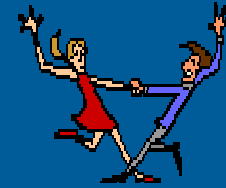
Quality cycle



Variance Analysis

- Clinical pathways set up to ensure correct variance documentation
- Variance stickers introduced
- Various attempts to devise spreadsheet
- Need for automated system identified

Variance Analysis



- Implementation *TrendCare* Variance system
- Allows for use of pathway format and variance program
- Outcome goal variances tracked
- Outcome goals completed on daily basis

Michele Dobe

Clinical Pathway Coordinator

Epworth Freemasons

Telephone: (03) 9483 3342 – Tues & Wed

Message: (03) 9483 3341

Email: micheled@fmh.com.au

Epworth Freemasons Hospital

www.epworth.org.au/epworthfreemasons

