



Emergency Nurse Practitioners - An Alternative Model of Health Care Delivery

Kylie Wilson

(Emergency Nurse Practitioner Candidate)

The Alfred Emergency and Trauma Centre, Melbourne.



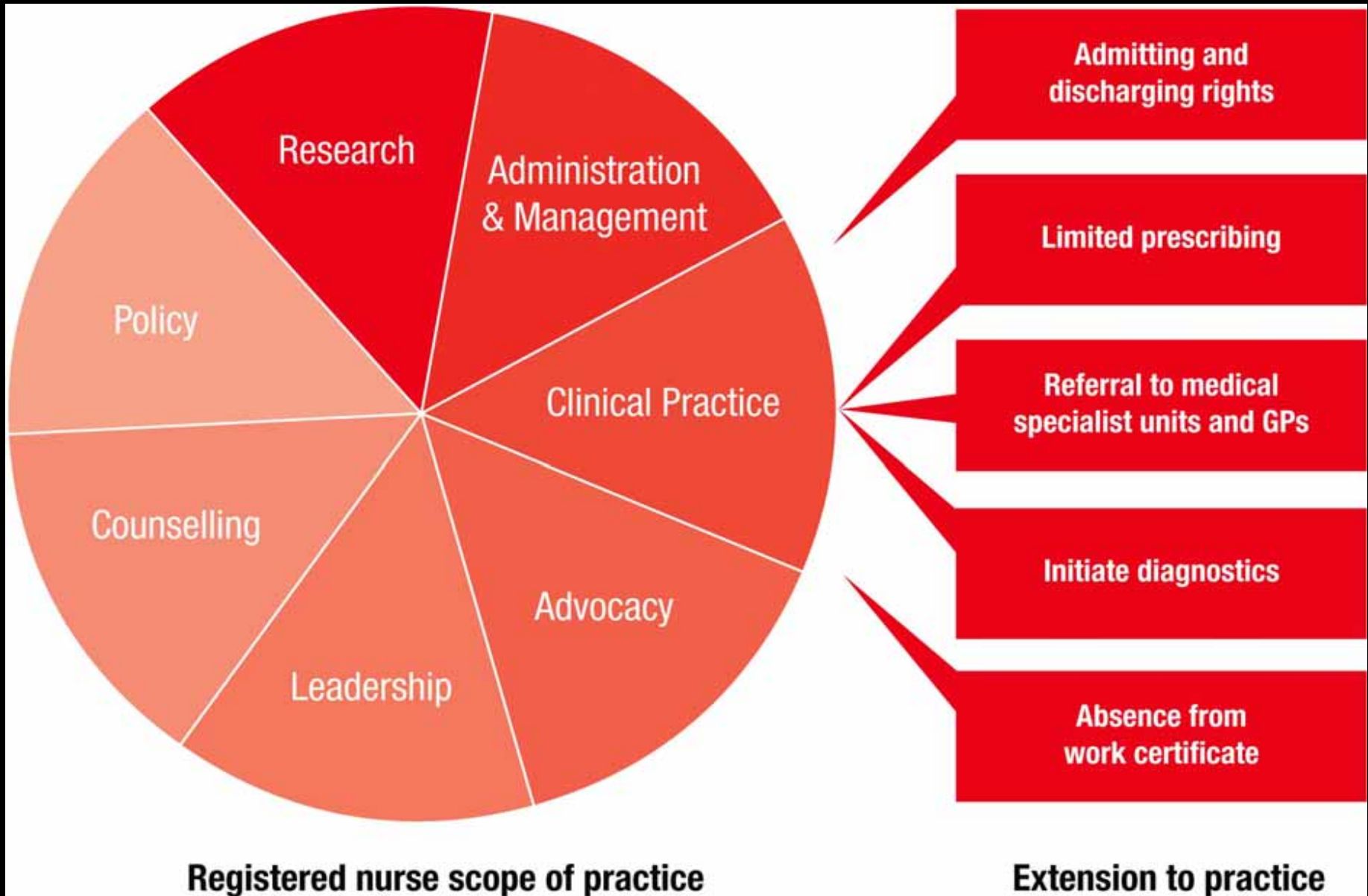
OUTLINE

- The Evolution of the Emergency Nurse Practitioner
- Emergency Nurse Practitioner model of care
- Positive impact on patient waiting times and length of stay

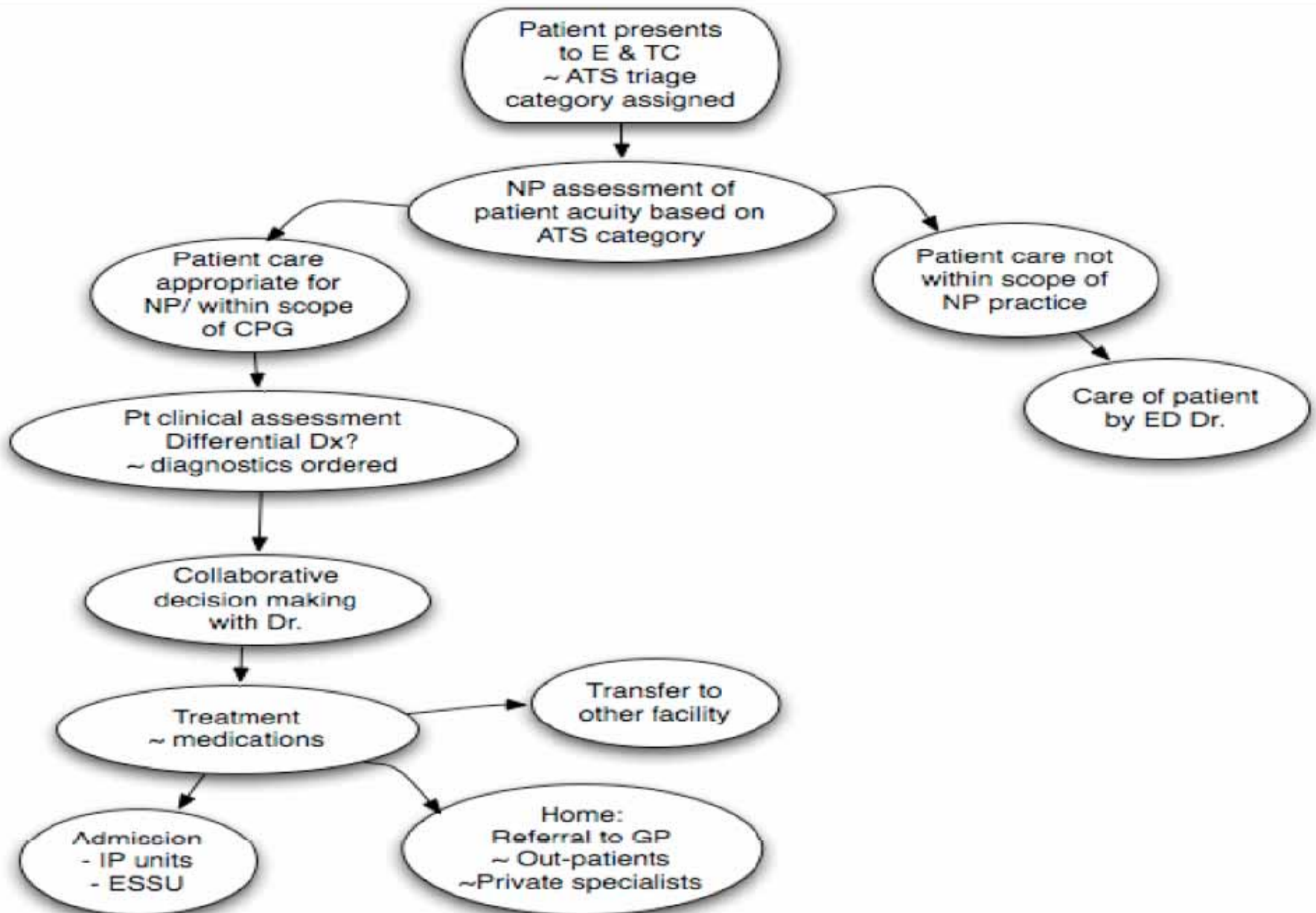
EMERGENCY NURSE PRACTITIONER EVOLUTION

- *Increased societal demand for access to affordable, quality health care*
- *Responsive service matched to demand patterns*
- *Advanced nursing framework to enhance health care delivery*

NP extensions to practice

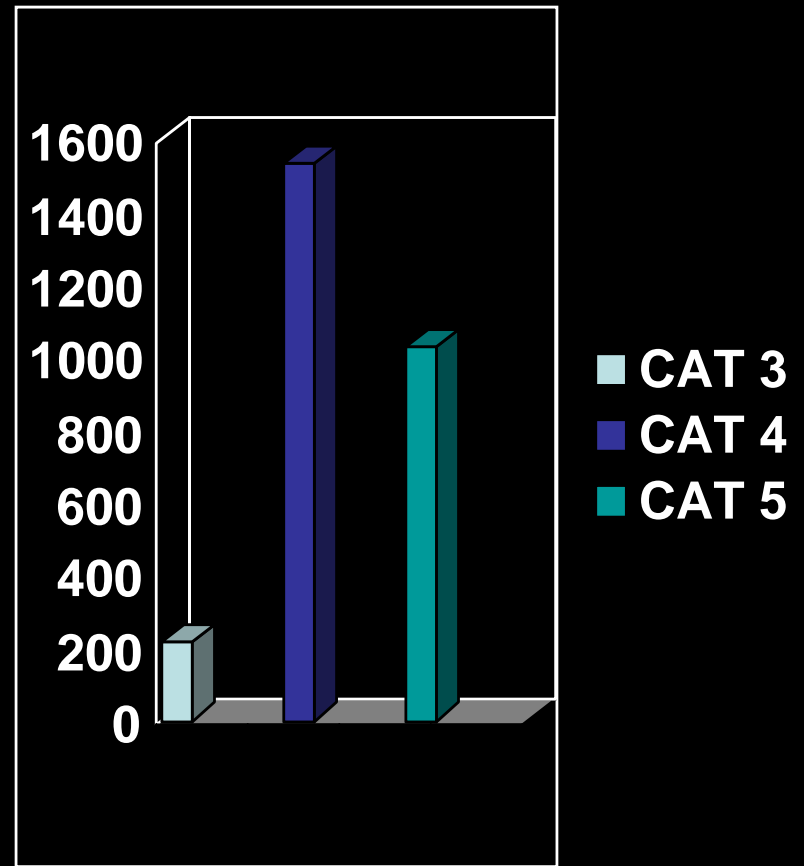


NURSE PRACTITIONER MODEL OF CARE



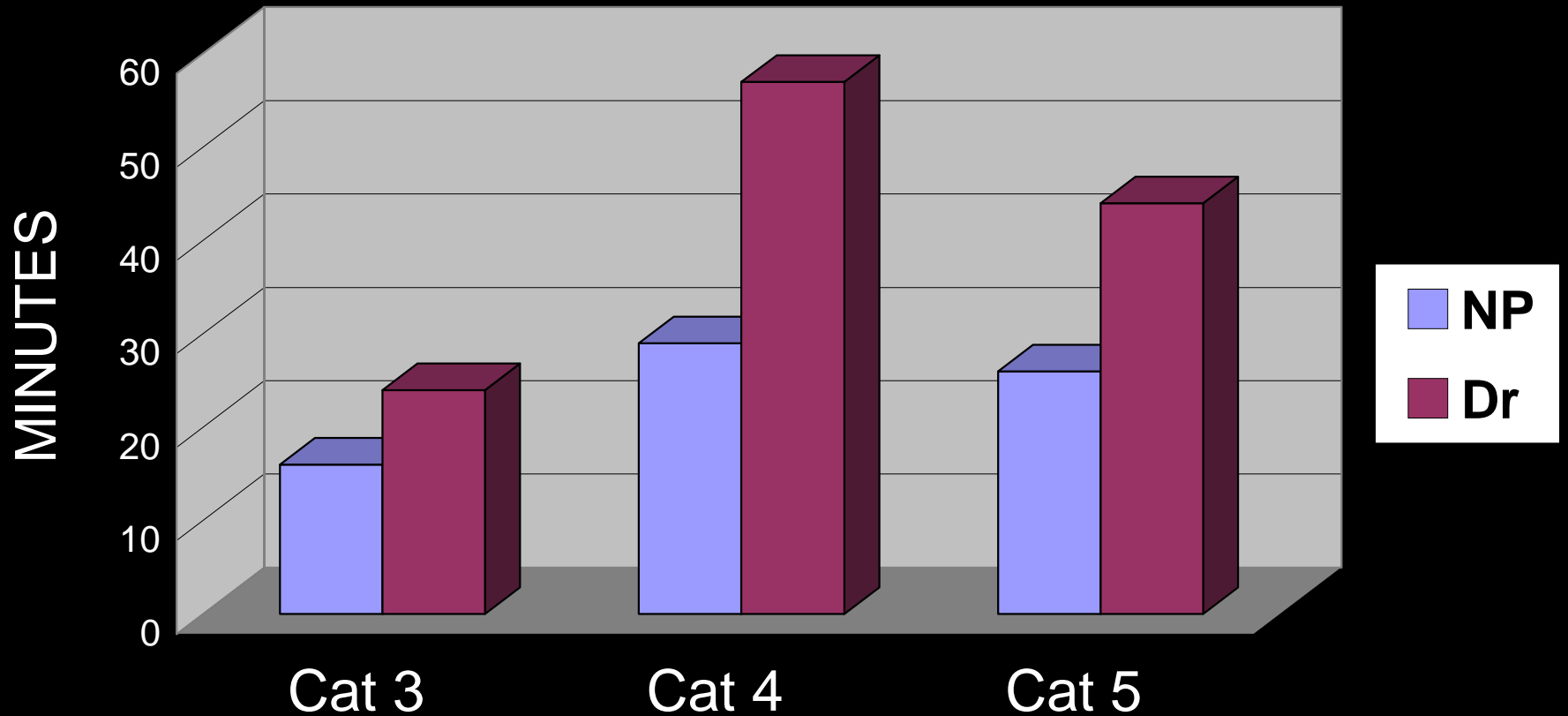
Emergency & TC 2006 data

ATS 1	900 Pts
ATS 2	5000 Pts
ATS 3	17000 Pts
ATS 4	16000 Pts
ATS 5	5500 Pts



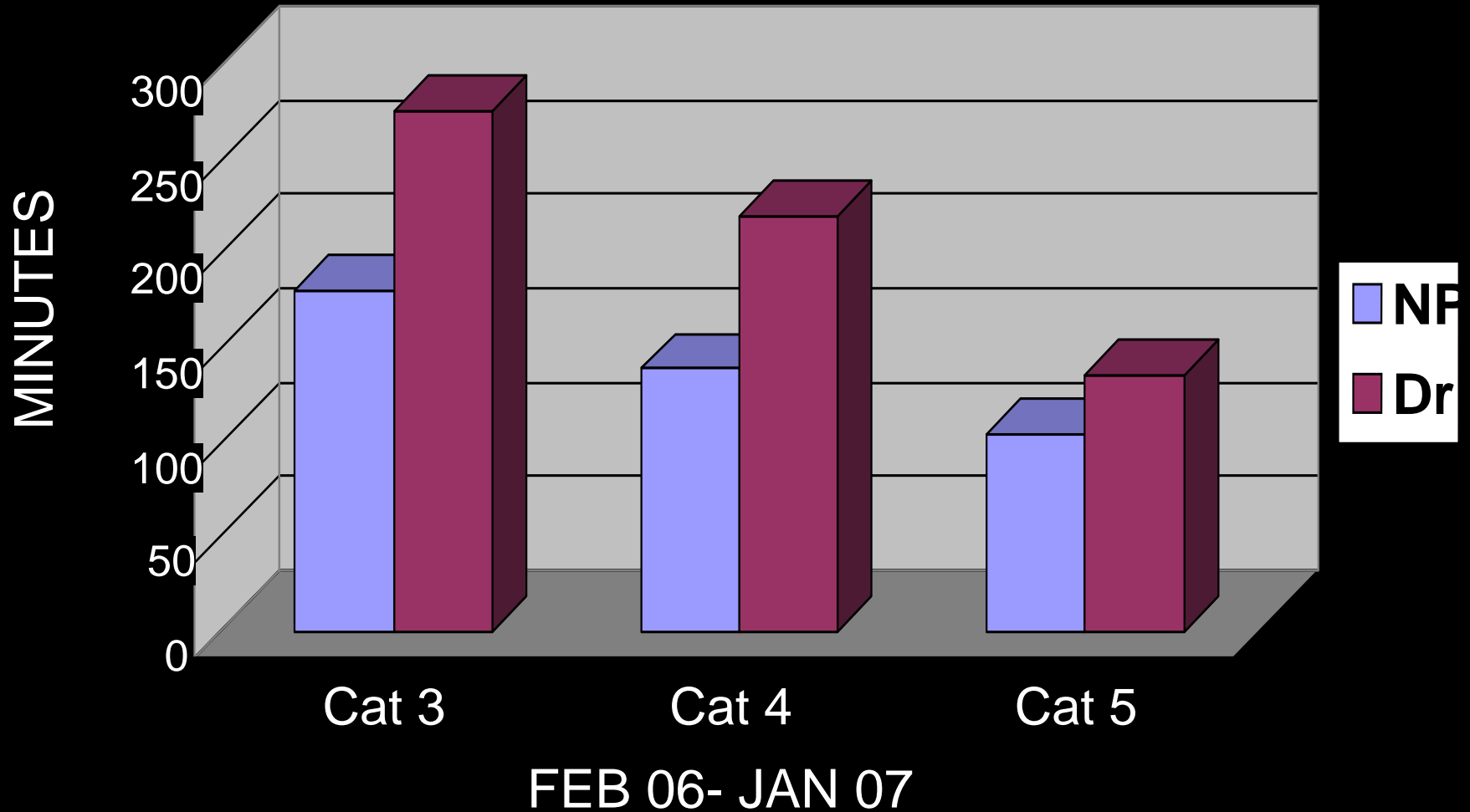
NP Pt's by ATS

Time to be seen



FEB 06- JAN 07

Length of Stay



CONCLUSION



- ~ ENP model provides service orientated, efficient health care
- ~ Decrease in waiting time and LOS for patient's of lower acuity
- ~ Improved quality and timely delivery of services



Npc@alfred.org.au