

An Innovative Model for Managing Chest Pain Presentations

2007 NSW Health Awards Finalist

Karen Lintern
(Cardiac CNC, Liverpool Hospital)
June 2008

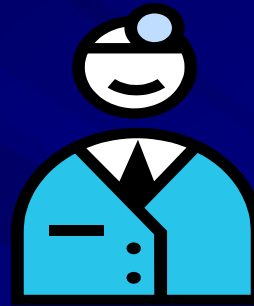
Nature & Extent of the Problem

- Exercise Stress Testing (EST) prior to discharge is recommended for patients who present to ED with “intermediate risk’ chest pain
 - Admission required to await inpatient EST
 - High demand for cardiology beds led to ED access block
 - Delayed access to inpatient EST led to increased LOS.

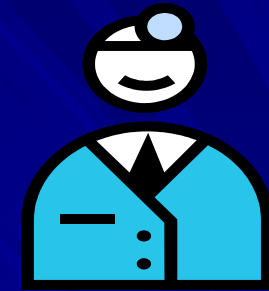
Pre - Existing Model



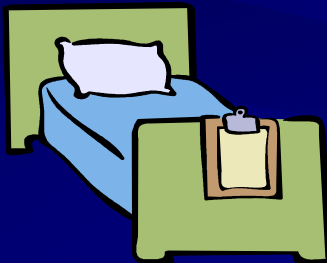
1. Pt arrives in ED



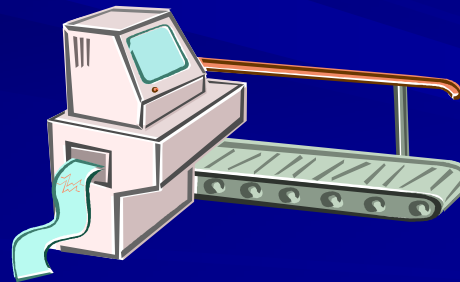
2. ED Physician



3. Cardiology Team



4. Wait for CCU Bed



5. Wait in CCU
for EST in
Cardiology Dept



6. Up to 4 days in
Hospital

Project Aims

- To reduce unnecessary admissions
- To better utilise inpatient beds
- To reduce ED access block
- To improve access to Exercise Stress Testing (EST)

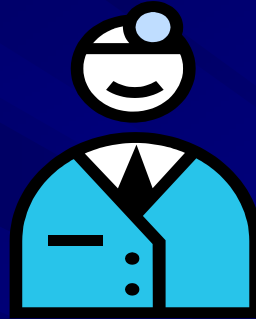
Planning & Implementing Solutions

- Proposal developed for an additional 7 day/week specialist nurse-led EST service designed specifically to meet ED demand
- Policies & procedures to support the service developed in consultation with ED (including the introduction of a chest pain pathway)
- Regular interdepartmental meetings scheduled to review progress during the trial period
- Model process clearly defined & documented

Specialist Nurse Led Service



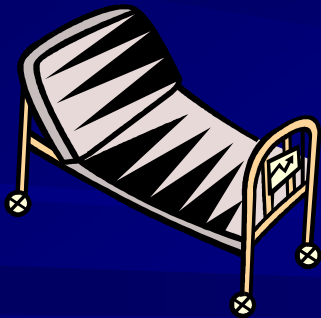
1. Arrives in ED



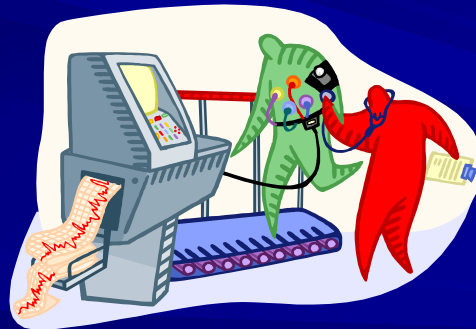
2. ED Physician



3. Chest Pain Pathway



4. ESSU



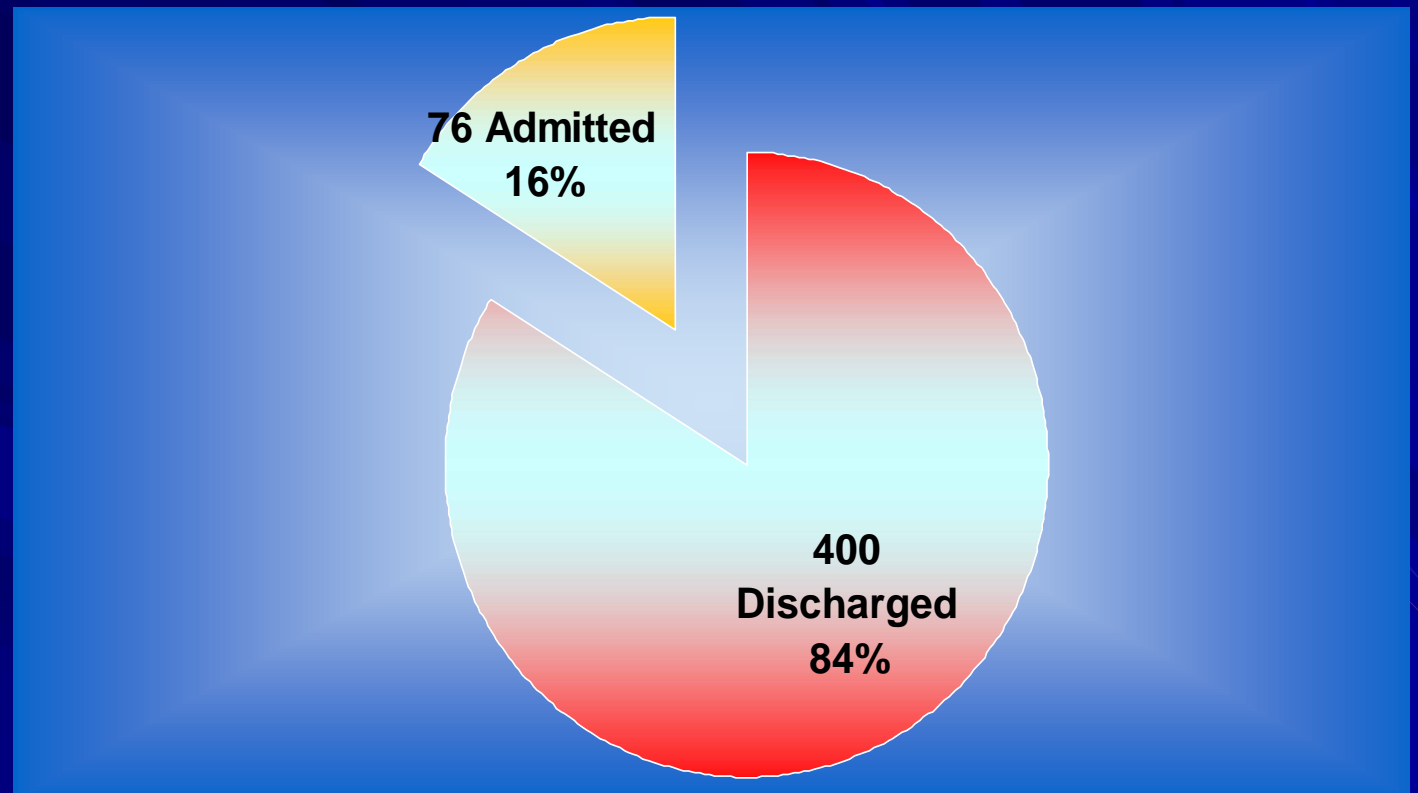
5. CLN Performs EST



6. Up to 24 hours in Hospital

Outcomes & Evaluation

■ May 06
to
Apr 07



■ No adverse outcomes identified during 30 day telephone follow-up of eligible intermediate risk patients

Update

- As at 31 May 2008, the CLNs have conducted **1028** EST on patients in the ED
 - **869** patients (84.5%) were discharged directly from the ED.
 - No adverse outcomes from nurse supervised stress testing

Additional Positive Outcomes

- Enhanced communication & development of relationships between CCU and ED staff
- Provision of Clinical Support to ED Nursing staff
- Assisting Cardiology Teams in ED
- Patient Education
- Patient Escorts

Sustaining Change

- Permanent funding approved following evaluation of benefits
 - 1 .42 FTE RN added to CCU staffing profile
 - Additional staff trained (5) to allow rotation and provide leave cover
- Commencement of ED Cardiology Team January 2008

The Future

- Recommencement of ED Registrar cover in the ESSU
- Streamlining the role of the ED Cardiology team
- Investigate the potential for Cardiology Nurse Practitioner

Exercise Stress Testing Area in ED

