
Reducing hospital admissions- a front line allied health team

Annette Barton, Leader Care Co-ordination Team

Emergency Department

Sir Charles Gairdner Hospital, Perth, WA

Content

- About Sir Charles Gairdner Hospital
- History, composition and vision of the Care Co-ordination Team
- Data from Occupational Therapist/Physiotherapist
 - patients numbers
 - destination
 - diagnosis

SCGH Emergency Department

- 52,000 ED presentations pa
- 48% discharge rate from ED
- Catchment area- elderly, green leafy suburbs
- 15% seen by CCT
- Some diagnosis as much as 50% eg falls

SCGH Emergency Department

- Emergency department consists of
 - Fast track
 - Main dept
 - 24 hour ward
- Acute assessment Unit – 72 hour
(joining to become surgical and medical unit)
- Hospital wards

The Allied Health Team

Called the Care Co-ordination team

- Occupational Therapist/Physiotherapist
- Pharmacist
- Discharge Nurse
- Social Worker

The Care Coordination Team

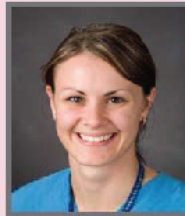
SCGH ED CARE COORDINATION TEAM



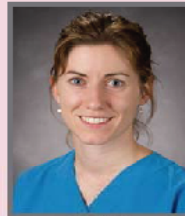
PHYSIOTHERAPY X7402 Pager 4084



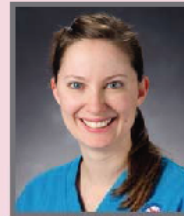
EMMA



GEMMA



EMMA



MERRILYN



OFRA



MIKE



CATHERINE

OCCUPATIONAL THERAPY X7402 Pager 4084



TAMALA



KRISTIE



KATE



DEBRA



ANNETTE



TRACEY



CASSIE



SOCIAL WORK Pager 4018



JO



SUSANNE



MICK

DISCHARGE CO-ORDINATORS X2086



REBECCA



PENNY

PHARMACY Pager 4604



SARAH



Produced by Audio Visual Production Unit Ref No: 0709-09



CCT Vision and objectives

- Provide quality **assessment and intervention** to facilitate safe and effective patient discharge
- Prevent unnecessary and/ or inappropriate **hospital admissions**
- Collaborate with **community and hospital outreach services**
- Commence ***early intervention*** for patients requiring admission

The Care Coordination Team

- Definite Admits- eg #NOF, requiring immediate surgery
- **Maybe admit or discharge- eg back pain, fall, #, elderly**
- Definite discharge- sutures, eye injury

Value of Allied health in ED

Patients we see fall into 4 Categories -

- Reduce hospital admission
- Reduce LOS in ED- 4 hour rule
- Reduce hosp admissions in the future
- Screening for the COAG Older Person

Reduce hospital admission

OT and PT

- 6 patients a day
- Many take longer than the 4 hours
- some go from 24 hour ED ward

- Access to immediate
 - OT home visit + equipment
 - take home + settling service til 9-00pm
 - home care packages

Reduce LOS in ED- 4 hour rule

- By functional and mobility assessment destination decision made quicker
- About 7 patients a day

Reduce LOS in ED- 4 hour rule



Reduce hosp admissions in the future

- These are often older patients
- Even though a 'definite' discharge - if you can set these people up with services, future admissions will result in shorter hospital LOS

Reduce hosp admissions in the future



Screening for the COAG Older Person

- Screen all over 75 yo
- 2 patients per day have no other intervention
- 4 patients per day screen + intervention

Screening for the COAG Older Person

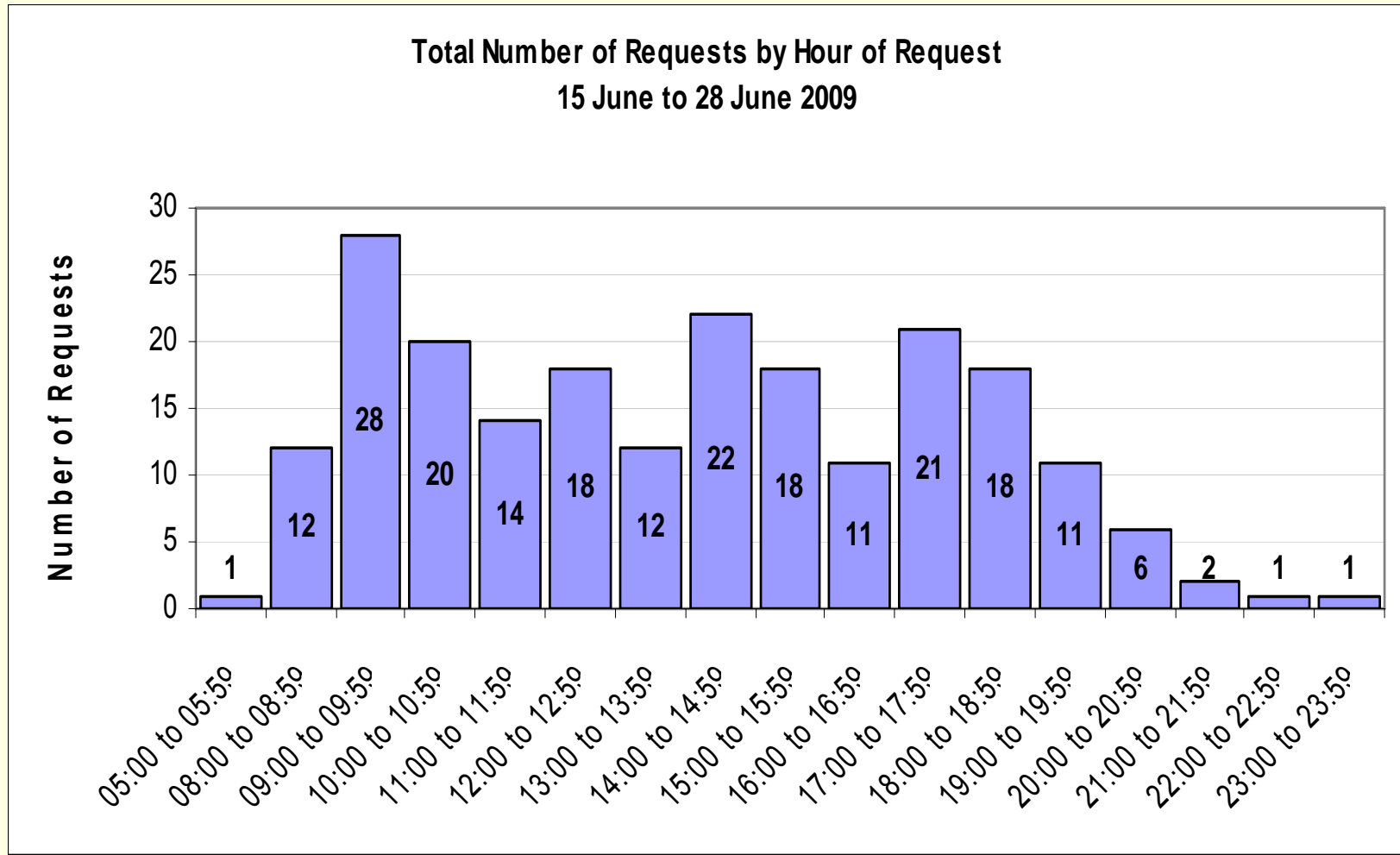


The Occupational Therapy/ Physiotherapy Team

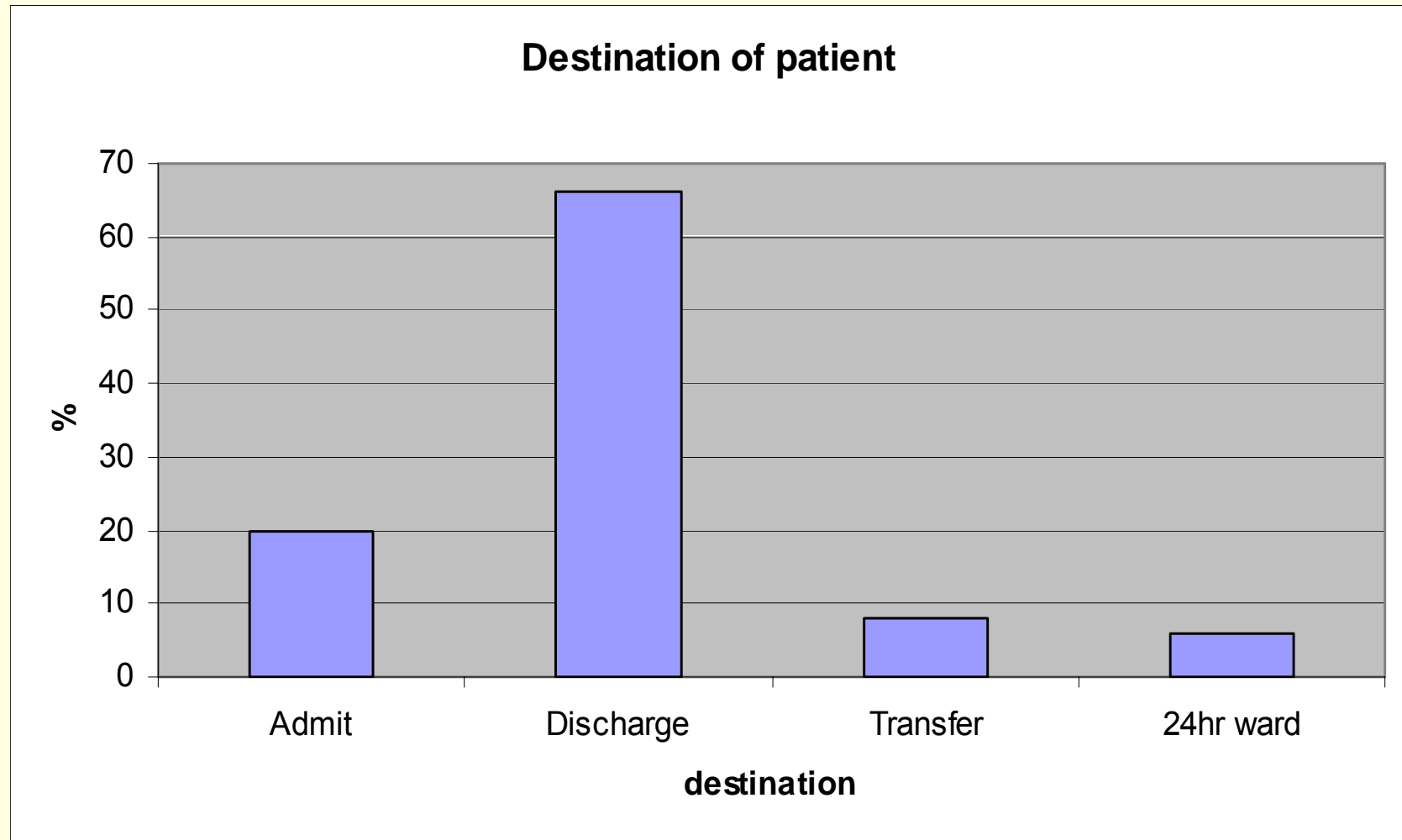
- Interdisciplinary
- Experienced senior therapists
- 7 day service
- 0800 - 2100 hrs



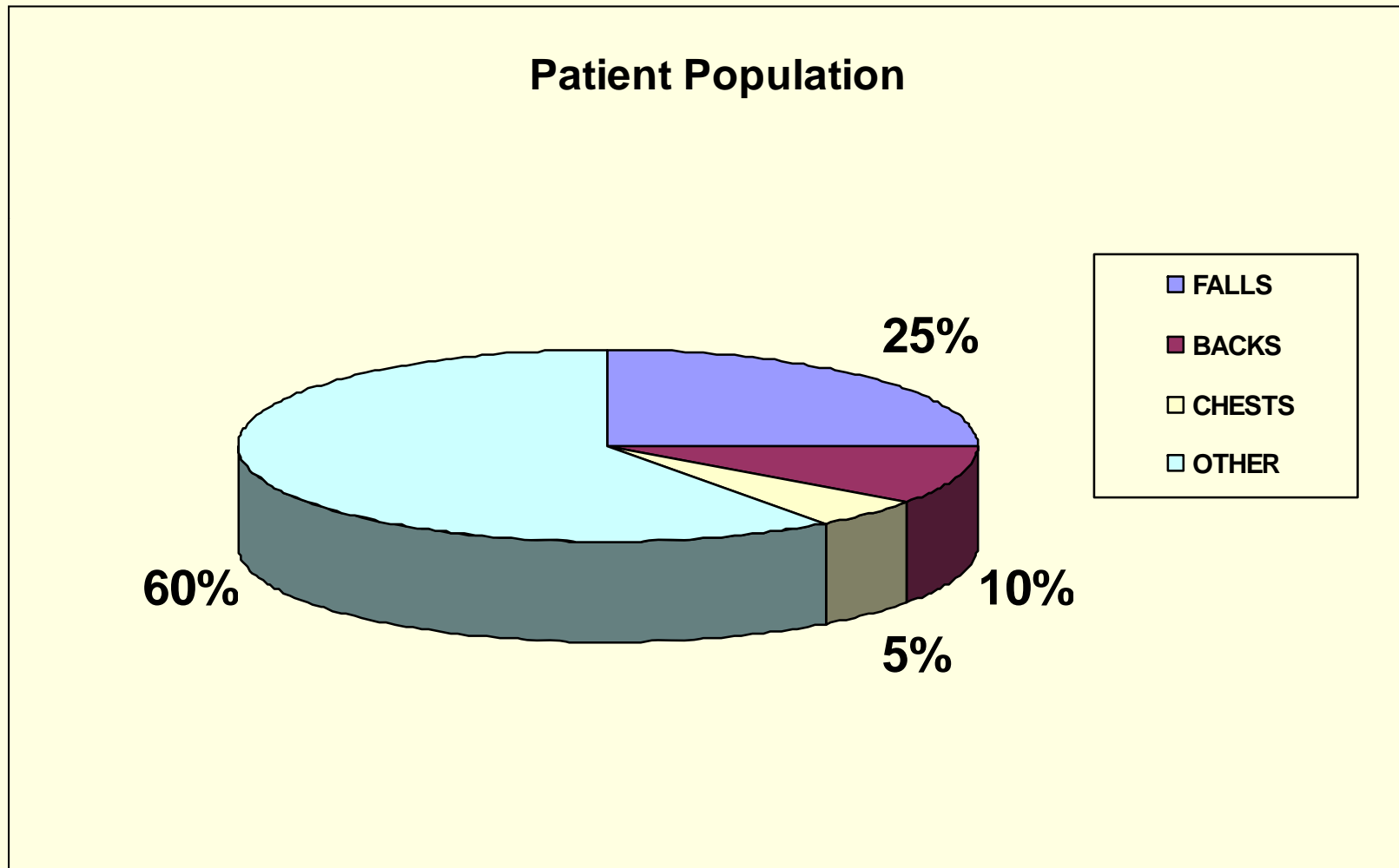
Referrals by time of day



Patient Destination- average month

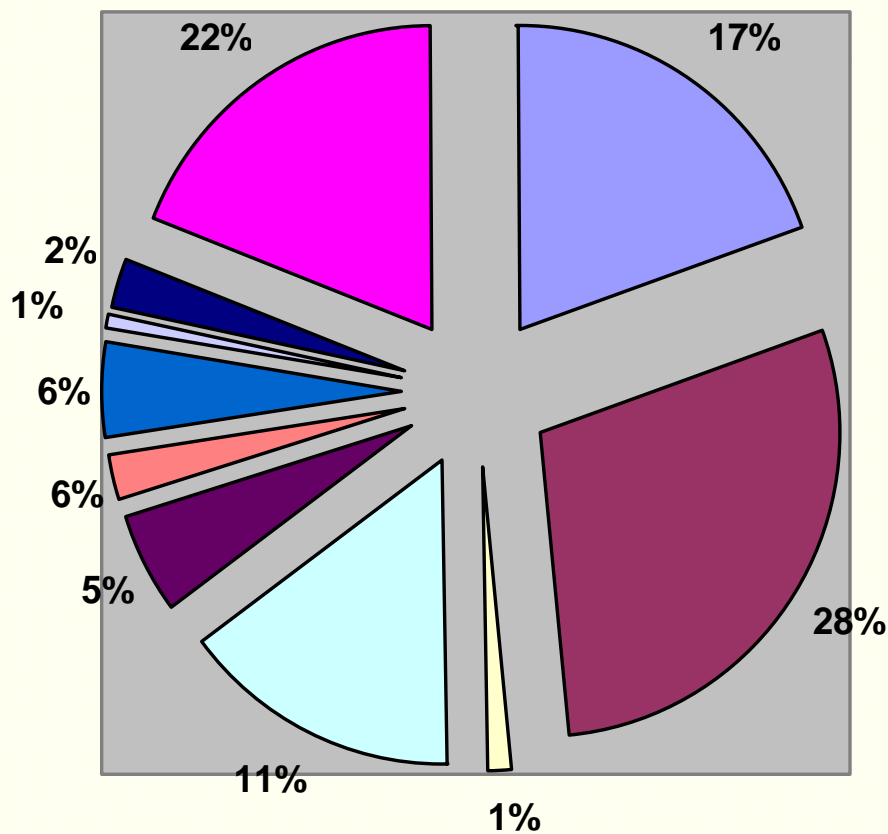


Patient Population



“Other “ patients

Composition of "Other" Patients



- FRACTURE
- MUSCULOSKELETAL
- ACOPIA
- NEURO
- COLLAPSE
- CARDIAC
- OVERDOSE
- PSYCH
- GOUT
- UNWELL



Assessment



Personal Care

Bed Mobility

Transfers

Mobility

Function

Social



Intervention



Splinting

Upper Limb Care



Education



**Falls Prevention
Education**

Equipment Provision



Follow up



OT Assessment at the Falls Clinic

Conclusion

- Allied Health has a lot to offer as a front line service
- Need to-
 - Add value- ↓admission and LOS
 - Interdisciplinary
 - Hours vs time hospital presentation

Our Perfect Patient!

