



# ClinEdq

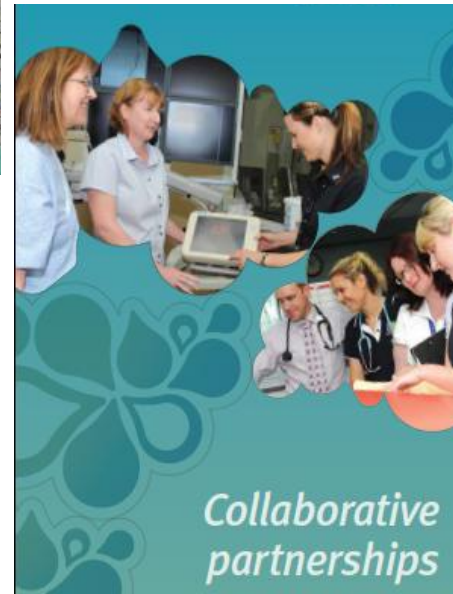
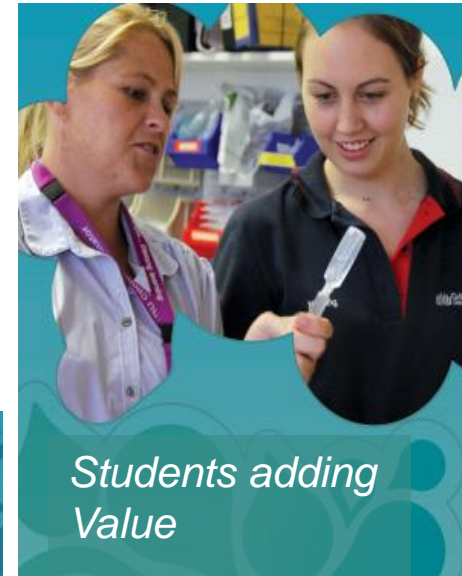
Allen Love

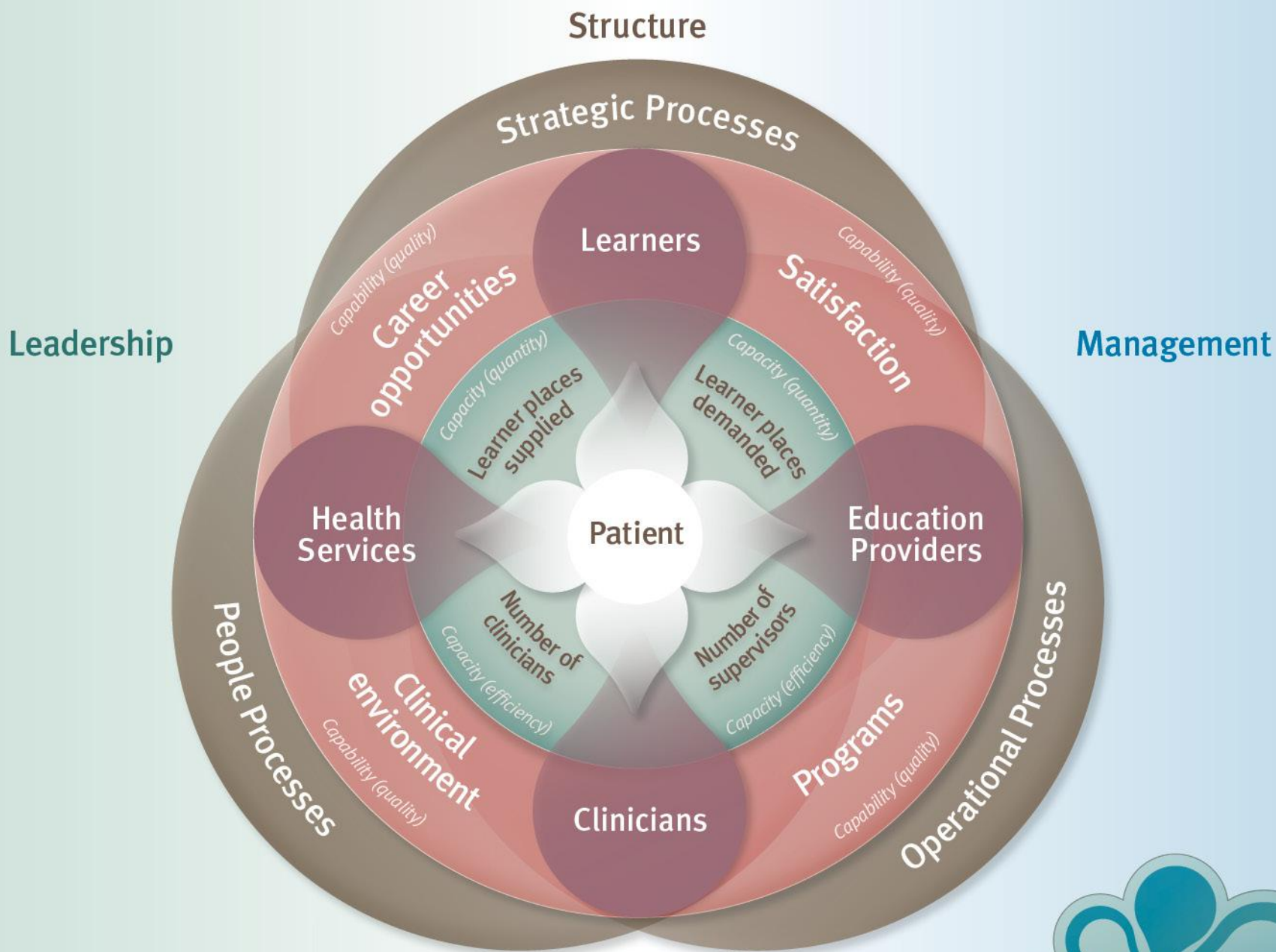
*Connecting education  
to health care*

## The Ingredients, Not the Recipe

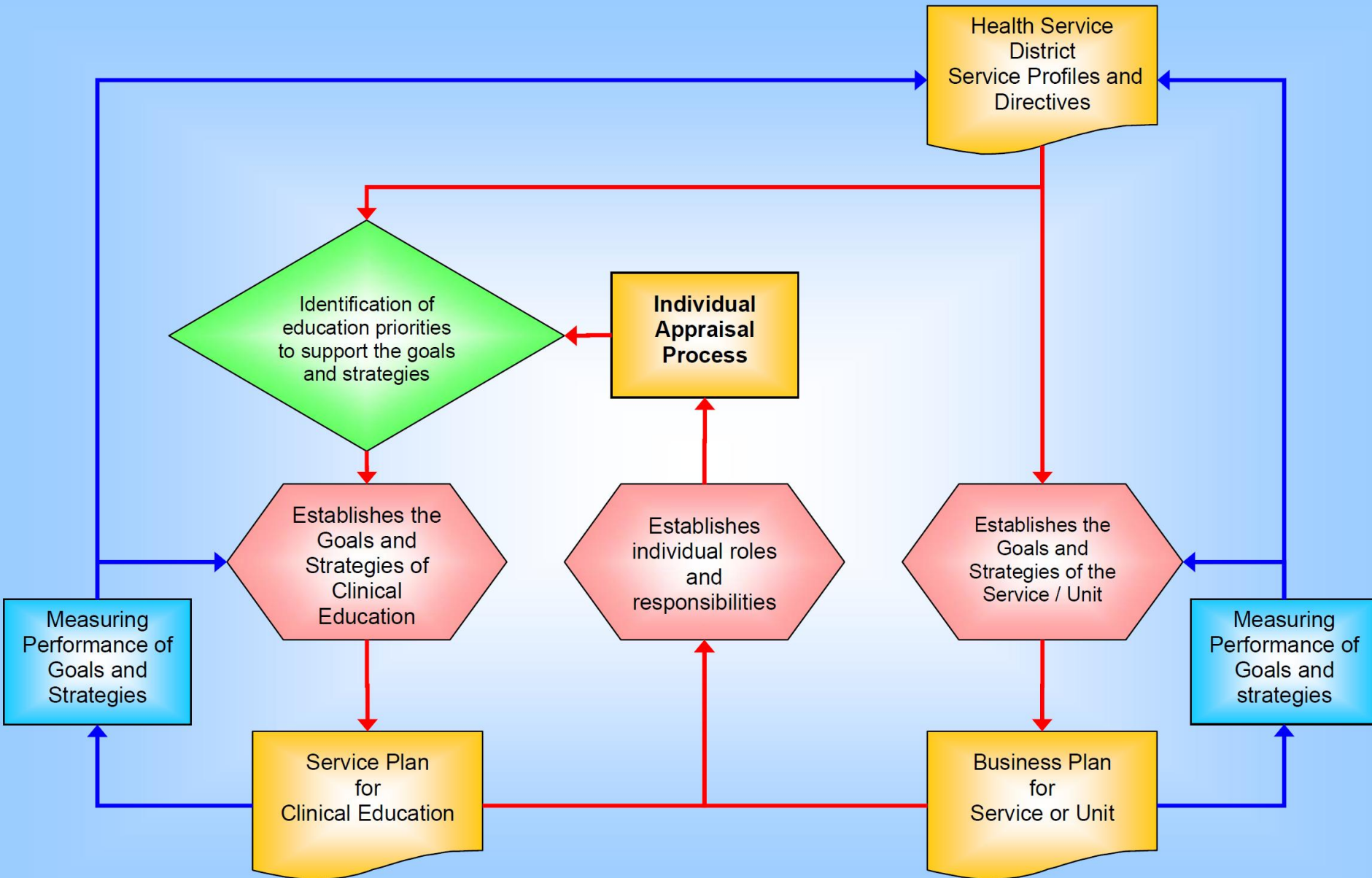
A framework for effective clinical learning environments

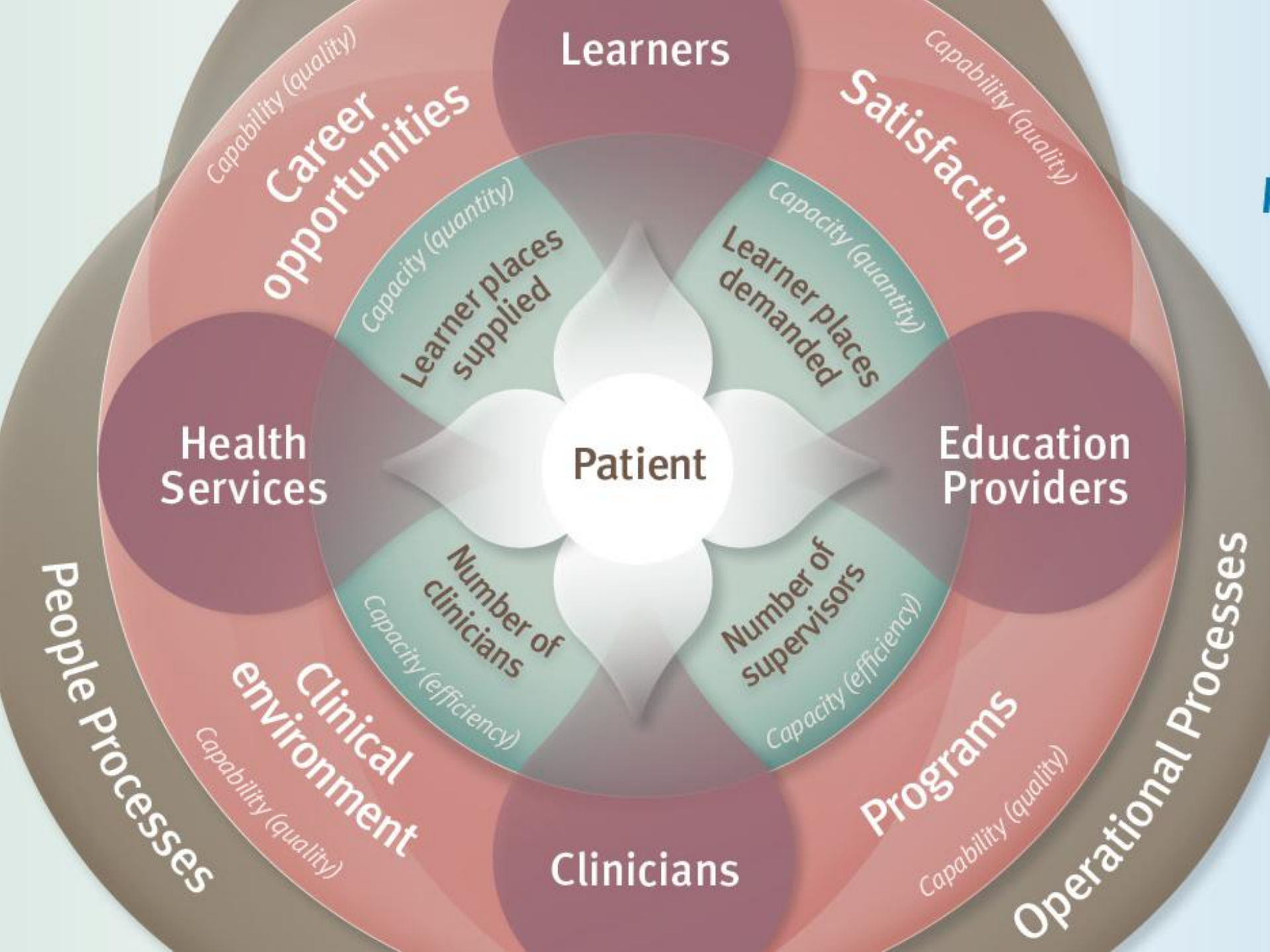
# Creating sustainable learning environments





# Flowchart of processes for an education service plan





**Learners**

**Satisfaction**

**Education Providers**

**Patient**

**Health Services**

**Clinicians**

**Programs**

**Clinical environment**

**People Processes**

**Operational Processes**

**Career opportunities**

**Learner places supplied**

**Learner places demanded**

**Number of clinicians**

**Number of supervisors**

*Capability (quality)*

*Capability (quality)*

*Capacity (quantity)*

*Capacity (quantity)*

*Capacity (efficiency)*

*Capacity (efficiency)*

*Capability (quality)*

*Capability (quality)*

# Structures and Cubby Houses



# Cubby Houses are designed for a reason



# So what makes a cubby house great?



# Imagination and innovation





# ClinEdQ

Clinical Education and Training **Queensland**



## ClinEdQ website

[www.health.qld.gov.au/clinedq](http://www.health.qld.gov.au/clinedq)